

DEXSTAR[®]

WHEEL COMPANY

Made in USA



WHEELS & RIMS TO KEEP YOUR COMPANY MOVING FORWARD

- Trailers: RV - Utility - Cargo - Marine - Manufactured Housing
- Lawn & Garden: Tractors - Mowers
- Agricultural: Farm Equipment
- E-Coat Primer Powder Finish
- Meets DOT Specifications
- Made in USA
- ISO 9001:2008



EIGHT-SPOKE



Part No.	Rim Size	Bolt Circle	Pilot Dia.	Stud Size	Offset	Capacity & PSI
017-213-xx	12x4JA	4-4	2.84	1/2" - 20 60*	0	1250 @ 90 psi
017-214-xx	12x4JA	5-4.5	3.19	1/2" - 20 60*	0	1250 @ 90 psi
017-201-xx	13x4.5JJ	4-4	2.65	1/2" - 20 60*	0	1360 @ 50 psi
017-189-xx	13x4.5JJ	5-4.5	3.19	1/2" - 20 60*	0	1660 @ 65 psi
017-142-xx	14x5.5JJ	5-4.5	3.19	1/2" - 20 60*	0	2040 @ 65 psi
017-143-xx	15x5JJ	5-4.5	3.19	1/2" - 20 60*	0	1820 @ 80 psi
017-384-xx	15x5JJ	5-5	3.19	1/2" - 20 60*	0	1820 @ 80 psi
017-149-xx	15x6JJ	5-4.5	3.19	1/2" - 20 60*	0	2050 @ 75 psi
017-422-xx	15x6JJ	5-5	3.19	1/2" - 20 60*	0	2050 @ 75 psi
017-144-xx	15x6JJ	6-5.5	4.27	1/2" - 20 60*	0	2830 @ 80 psi
017-243-xx	16x6K	6-5.5	4.27	1/2" - 20 60*	0	3050 @ 90 psi
017-162-xx	16x6K	8-6.5	4.90	1/2" - 20 60* 9/16" - 18 60*	0	3750 @110 psi
017-308-xx	16x6K	8-6.5	4.90	1/2" - 20 60* 9/16" -18 60*	0	3960 @110 psi
017-244-xx	16.5x6.75	6-5.5	4.27	1/2" - 20 60*	0	3040 @ 80 psi
017-163-xx	16.5x6.75	8-6.5	4.90	1/2" - 20 60* 9/16" -18 60*	0	3530 @ 90 psi

MINI-MOD



Part No.	Rim Size	Bolt Circle	Pilot Dia.	Stud Size	Offset	Capacity & PSI
017-227-xx	12x4JA	4-4	2.84	1/2" -20 60*	0	1250 @ 90 psi
017-228-xx	12x4JA	5-4.5	3.19	1/2" -20 60*	0	1250 @ 90 psi
017-366-xx	12x4JA	5-4.5	3.19	1/2" -20 60*	.50 out	1520 @ 80 psi
017-355-xx	13x4.5JJ	4-4	2.65	1/2" - 20 60*	0	1660 @ 65 psi
017-229-xx	13x4.5JJ	5-4.5	3.19	1/2" - 20 60*	0	1660 @ 65 psi
017-230-xx	14x5.5JJ	5-4.5	3.19	1/2" - 20 60*	0	2040 @ 65 psi
017-231-xx	15x5JJ	5-4.5	3.19	1/2" - 20 60*	0	1820 @ 80 psi
017-377-xx	15x5JJ	5-5	3.19	1/2" - 20 60*	0	1820 @ 80 psi
017-232-xx	15x6JJ	5-4.5	3.19	1/2" - 20 60*	0	2050 @ 75 psi
017-430-xx	15x6JJ	5-5	3.19	1/2" - 20 60*	0	2050 @ 75psi
017-233-xx	15x6JJ	6-5.5	4.27	1/2" - 20 60*	0	2830 @ 80 psi
017-255-xx	16x6K	6-5.5	4.27	1/2" - 20 60*	0	3050 @ 90 psi
017-281-xx	16x6K	8-6.5	4.90	1/2" - 20 60* 9/16" -18 60*	.50 in	3750 @110 psi
017-293-xx	16x6K	8-6.5	4.90	1/2" - 20 60* 9/16" -18 60*	0	3750 @110 psi
017-309-xx	16x6K	8-6.5	4.90	1/2" - 20 60* 9/16" -18 60*	.50 in	3960 @110 psi
017-310-xx	16x6K	8-6.5	4.90	1/2" - 20 60* 9/16" -18 60*	0	3960 @110 psi
017-257-xx	16.5x6.75	6-5.5	4.27	1/2" - 20 60*	0	3040 @ 80 psi
017/280-xx	16.5x6.75	8-6.5	4.90	1/2" - 20 60* 9/16" -18 60*	.50 in	3530 @ 90 psi
017-296-xx	16.5x6.75	8-6.5	4.90	1/2" - 20 60* 9/16" -18 60*	0	3530 @ 90 psi

TRI-OVAL



Part No.	Rim Size	Bolt Circle	Pilot Dia.	Stud Size	Offset	Capacity & PSI
017-347-xx	15x5JJ	5-4.5	3.19	1/2" - 20 60*	0	1820 @ 50 psi
017-345-xx	15x6JJ	5-4.5	3.19	1/2" - 20 60*	0	2050 @ 65 psi
017-348-xx	15x6JJ	6-5.5	4.27	1/2" - 20 60*	0	2830 @ 80 psi
017-343-xx	16x6K	8-6.5	4.90	9/16" -18 60*	0	3750 @110 psi

Note: Tire and Rim Association permits JJ and JB Rim contour for 13" wheel.



WHEEL COMPANY

Made in the USA

www.dexstarwheel.com

DIRECTIONAL



Part No.	Rim Size	Bolt Circle	Pilot Dia.	Stud Size	Offset	Capacity & PSI
WITH RIVETS						
017-323-xx	13x4.5JJ	5-4.5	3.19	1/2" - 20 60*	0	1360 @ 50 psi
017-324-xx	14x5.5JJ	5-4.5	3.19	1/2" - 20 60*	0	1870 @ 50 psi
017-325-xx	15x5JJ	5-4.5	3.19	1/2" - 20 60*	0	1820 @ 50 psi
017-326-xx	15x6JJ	6-5.5	4.27	1/2" - 20 60*	0	2600 @ 75 psi
NO RIVETS						
017-318-xx	13x4.5JJ	5-4.5	3.19	1/2" - 20 60*	0	1360 @ 50 psi
017-319-xx	14x5.5JJ	5-4.5	3.19	1/2" - 20 60*	0	1870 @ 50 psi
017-320-xx	15x5JJ	5-4.5	3.19	1/2" - 20 60*	0	1820 @ 50 psi
017-321-xx	15x6JJ	6-5.5	4.27	1/2" - 20 60*	0	2600 @ 75 psi

CONVENTIONAL



Part No.	Rim Size	Bolt Circle	Pilot Dia.	Stud Size	Offset	Capacity & PSI
017-078-xx	13x4.5JJ	5-4.5	2.62	1/2" - 20 60*	.50 In	1480 @ 50 psi
017-114-xx	14x5.5JJ	5-4.5	2.62	1/2" - 20 60*	.50 In	1865 @ 50 psi
017-115-xx	15x5JJ	5-4.5	2.62	1/2" - 20 60*	.50 In	1820 @ 50 psi
017-116-xx	15x5JJ	6-5.5	3.65	1/2" - 20 60*	.50 In	1680 @ 50 psi
017-117-xx	15x6JJ	5-4.5	2.62	1/2" - 20 60*	.50 In	1820 @ 75 psi
017-118-xx	15x6JJ	6-5.5	3.65	1/2" - 20 60*	0	2600 @ 75 psi
017-235-xx	16x6K	6-5.5	3.65	1/2" - 20 60*	0	3050 @ 90 psi
017-153-xx	16x6K	8-6.5	4.89	1/2" - 20 60* 9/16"-18 60*	.50 In	3750 @110 psi
017-302-xx	16x6K	8-6.5	4.89	1/2" - 20 60* 9/16"-18 60*	.50 In	3960 @110 psi
017-301-xx	16.5x6.75	6-5.5	3.65	1/2" - 20 60*	.50 In	3040 @ 80 psi
017-236-xx	16.5x6.75	6-5.5	3.65	1/2" - 20 60*	0	3040 @ 80 psi
017-154-xx	16.5x6.75	8-6.5	4.89	1/2" - 20 60* 9/16"-18 60*	.50 In	3530 @ 90 psi

SOLID CENTER



Part No.	Rim Size	Bolt Circle	Pilot Dia.	Stud Size	Offset	Capacity & PSI
017-260-xx	12x4JA	4-4	2.84	1/2" - 20 60*	0	1250 @ 90 psi
017-295-xx	12x4JA	5-4.5	3.19	1/2" - 20 60*	0	1250 @ 90 psi
017-288-xx	13x4.5JJ	4-4	2.65	1/2" - 20 60*	0	1660 @ 65 psi
017-250-xx	13x4.5JJ	5-4.5	3.19	1/2" - 20 60*	0	1660 @ 65 psi
017-252-xx	14x5.5JJ	5-4.5	3.19	1/2" - 20 60*	0	2040 @ 65 psi
017-350-xx	15x5JJ	5-4.5	3.19	1/2" - 20 60*	0	1820 @ 80 psi
017-356-xx	15x6JJ	5-4.5	3.19	1/2" - 20 60*	0	2050 @ 75 psi
017-367-xx	15x6JJ	6-5.5	4.27	1/2" - 20 60*	0	2830 @ 80 psi
017-422-xx	16x6K	8-6.5	4.9	1/2" - 20 60* 9/16"-18 60*	0	3750 @ 110 psi

DUALS



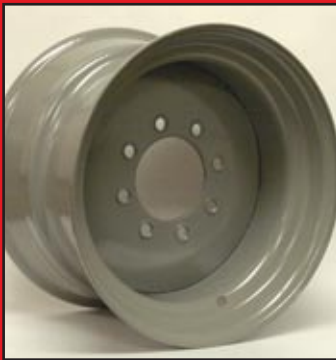
Part No.	Rim Size	Bolt Circle	Pilot Dia.	Stud Size	Offset	Capacity & PSI
HUB PILOTED WHEELS						
017-186-xx	14.5x7	8-6.5	4.75	5/8" - 18	5.65 out	3100 @100psi
017-279-xx	16x6K	8-6.5	4.75	5/8" - 18	5.50 out	3100 @110psi
017-158-xx	16x6K	8-6.5	4.56	5/8" - 18	5.50 out	3100 @110psi
017-160-xx	16x6K	8-6.5	4.88	5/8" - 18	5.50 out	3100 @110psi
017-157-xx	16.5x6.75	8-6.5	4.75	5/8" - 18	5.50 out	3100 @ 80psi
017-159-xx	16.5x6.75	8-6.5	4.56	5/8" - 18	5.50 out	3100 @ 80psi
017-161-xx	16.5x6.75	8-6.5	4.88	5/8" - 18	5.50 out	3100 @ 80psi

WHEEL OFFSET

Inset = Positive (+) moves tire towards centerline of trailer.

Outset = Negative (-) moves tire away from centerline of trailer.

SPECIALS



Part No.	Rim Size	Bolt Circle	Pilot Dia.	Stud Size	Offset	Capacity & PSI
STUD PILOTED 14.5" WHEELS						
017-370-xx	14.5x7	8-6.5	4.75	5/8"-18 90*	0	3070 @ 110 psi
017-283-xx	14.5x6	6-5.5	3.65	1/2"-20 60*	.50 out	3085 @ 100 psi
STUD PILOTED 16.5" WHEELS						
017-107-xx	16.5x9.75	8-6.5	4.78	5/8"-18 90*	.50 in	4200 @ 75 psi
017-215-xx	16.5x9.75	8-6.5	4.78	5/8"-18 90*	.30 out	4200 @ 75 psi
HUB PILOTED 17.5" WHEELS						
017-240-xx	17.5x6.75HC	8-6.5	4.75	5/8"-18	.31 out	4805 @ 125 psi
017-241-xx	17.5x6.75HC	8-6.5	4.75	5/8"-18	.19 in	4805 @ 125 psi
017-298-xx	17.5x6.75HC	8-6.5	4.75	5/8"-18	.50 out	6005 @ 125 psi
<i>Note: Hub Piloted Wheels require flange nuts.</i>						

RIMS - MH



Part No.	Rim Size	Mounting	Stud Size - Wheel Screw	Hub	Capacity & PSI
MH (Manufactured Housing) TIRE USE ONLY					
017-032-25	14.5x6.00MH	Rim Clamps	1/2"-13 Hex Head	MH	3100 @ 116 psi
<i>Note: Rim is not to be remounted.</i>					
DEMOUNTABLE MH					
017-053-xx	14.5x6.00MH	Rim Clamps	9-16"-18 Stud	MH	3050 @ 100 psi
017-048-xx	14.5x7.00MH	Rim Clamps	9-16"-18 Stud	MH	3230 @ 100 psi

VINTAGE 494



Part No.	Color	Size	Bolt Circle	Offset	Capacity
017-029-43	Silver Sparkle	13x4-1/2 JJ	4x9.44	.50 in	1315
017-119-43	Silver Sparkle	14x5.5 JJ	4x9.44	.50 in	1860
017-120-43	Silver Sparkle	15x5 JJ	4x9.44	.50 in	1680
017-121-43	Silver Sparkle	15x6 JJ	4x9.44	.50 in	2330

LAWN & GARDEN/AG



Part No.	Style	Rim Size	Bolt Circle	Stud Size	Pilot Dia.	Offset
017-403-xx	Solid	12x7JA	4-4	1/2"-20 60*	3.13	1.25 in
017-446-xx	Spoke	12x7JA	5-4.5	1/2"-20 60*	3.19	0
017-411-xx	Solid	12x8.5JA	5-4.5	1/2"-20 60*	3.13	1.25 in
017-424-xx	Spoke	12x8.5JA	4-4	1/2"-20 60*	2.84	0

Note: Different style centers and offsets are available.

PAINT CODES



Code #	Color	Code #	Color	Code #	Color
12	Bright White w/Red & Blue Stripes	23	Silver Badger - Full	1T	Black - Full
1W	Bright White - Full	43	Silver Sparkle	29	Orange Kubota - Full
65	Black	1S	Silver Sparkle - Full	25	E-Coat Gray
14	Bright White	60	Silver Starlight	28	Yellow - Deere
1X	Bright White w/Red & Blue Stripes - Full	52	Gray Medium	30	Galvanized

Wheels have Electrodeposition Primer with Powder Finish Coat.

Full - Wheels are Powder Coated on Front and Back Sides.



WHEEL COMPANY

Made in the USA

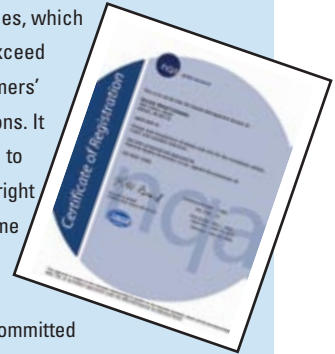
IMPRESSIVE Capabilities

Dexstar is capable of producing 12" to 16.5" wheels on its two high speed fully automated roll forming lines. A recent re-engineering of tooling has given Dexstar the capability of producing a 12 x 7 and a 12 x 8.5 wheel. The significant use of automation and robotics allows Dexstar's welding capabilities to be recognized as superior in the industry. Each Dexstar wheel is e-coated prior to going through a state-of-the art powder coat system, all of which is done in-house. Dexstar's automated operation gives the company the production capacity to supply the largest trailer distributors and manufacturers in the world.



SUPERIOR Quality

Dexstar Wheel Company is committed to provide products and services, which meet or exceed the customers' expectations. It is our goal to do things right the first time and every time. We are also committed to the philosophy of continuous improvement through the contribution of every employee.



LIMITED 2 YEAR WARRANTY

Dexstar Wheel Company warrants to the original purchaser that its wheels shall be free of defects in the material and workmanship for a period of two (2) years from the date of the first sale of the trailer incorporating such components.

WHAT YOU MUST DO

In order to make a claim:

1. You must be the original purchaser of the trailer of which the wheels were originally installed.
2. You must promptly notify us within the warranty period of any defect and provide us with any substantiation that we may reasonably request.
3. The wheels must have been installed and maintained in accordance with good industry practice and any specific Dexstar Wheel Company recommendations.

EXCLUSIONS

This warranty does not extend to or does not cover defects caused by:

1. Normal wear and tear.
2. Improper installation or use.
3. Improper wheel nut torque.

LIMITATIONS

1. In all cases Dexstar Wheel Company reserves the right to fully satisfy its obligations under the Limited Warranty by refunding the then-current list price of the defective wheel (or, if the wheel has been discontinued, of the most nearly comparable current product).
2. This warranty is nontransferable.

GENERAL

The foregoing warranty is exclusive and in lieu of all other warranties except that of title, whether written, or oral or implied, in fact or in law (including any warranty of merchantability or fitness for a particular purpose.)

This warranty gives you specific legal rights, and you may also have other rights which vary from state to state.

The duration of any implied warranties, including the implied warranties of merchantability and fitness for a particular purpose, are limited to the duration of the express warranties herein. Dexstar Wheel Company hereby excludes incidental and consequential damages, including loss of time, inconvenience, loss of use, towing fees, telephone calls or cost of meals, for any breach of any express or implied warranties of merchantability and fitness for a particular purpose.

Some states do not allow limitations on how long an implied warranty lasts, or the exclusion or limitation of incidental or consequential damages, so the above exclusions or limitations may not apply to you.

Contact the following with inquiries regarding this warranty:

**Dexstar Wheel Company
Quality Department
(574) 295-3535**





Dexstar Wheel Company

400 Collins Road • Elkhart, Indiana 46516
 Phone: (574) 295-3535 • Fax: (574) 522-5208

www.dexstarwheel.com



Customer Advisory WHEEL MATCHING

The diameters listed below represent the recommended sizes for wheel mounting faces.
 The dimensions indicated are for the flat contact that interface with the hub.

Bolt Pattern	Hub Diameter	Wheel Diameter	Value Hole	Stud Size	Wheel Bolt Torque
4 on 4.0"	5.50"	12" & 13"	.45	1/2"-20 -60*	50-75 LB/FT
5 on 4.5"	6.50"	12" & 13"	.45	1/2"-20 -60*	50-75 LB/FT
5 on 4.5"	6.50"	14" & 15"	.45	1/2"-20 -60*	90-120 LB/FT
5 on 5"	6.50"	15"	.45	1/2"-20 -60*	90-120 LB/FT
6 on 5.5"	7.4"	14.5" & 15"	.45	1/2"-20 60*	90-120 LB/FT
		16" & 16.5"	.625	1/2"-20 60* 9/16"-18 60*	90-120 LB/FT 175-225 LB/FT
8 on 6.5"	8.25"	14.5	.45	5/8" -18 90*	175-225 LB/FT
		16" & 16.5"	.625	1/2" -20 60*	90-120 LB/FT
				9/16"-18 60* 5/8"-18 90*	175-225 LB/FT 175-225 LB/FT
8 on 6.5"	Hub Piloted	14.5"	.45	5/8"-18 Flange	275-325 LB/FT
		16", 16.5" & 17.5	.625		

Improperly clamped wheels may loosen and could come off unexpectedly while traveling, resulting in a dangerous situation. Dexstar recommends that wheel fasteners be checked frequently and retorqued to the appropriate level as needed.

Also of vital importance is understanding the different wheel clamping systems. Smaller steel wheels up to and including some 16" varieties are normally stud piloted and will typically use a 60-degree cone nut. The cone portion of the nut mates to a matching cone seat in the wheel center. These are generally 1/2" - 20 or 9/16" - 18 thread sizes. There are some larger wheels that are designed to be clamped with 5/8" nuts featuring a 90-degree cone seat. This type of wheel generally does not have a center hole that closely fits the hub.

90-degree cone nuts must NEVER be used in 60-degree cone seat wheels. The use of mismatched nuts will result in a loss of clamping force and can cause wheel run-off.

Larger wheels generally will be hub piloted and require either clamping rings with 90 degree cone nuts to attach them to the hub or they can be mounted with flange nuts directly on the wheel. The benefit of the clamp ring system is they require lower torque. Both of these mounting systems typically use 9/16" - 18" or 5/8" - 18 thread size. Hub piloted wheels require a close fit of the center hole to the hub.

Make sure you understand the requirements of the wheels and clamping systems that you specify for your vehicles. Misuse can result in costly and dangerous failures.

**NO PART OF THIS CATALOG MAY BE REPRODUCED WITHOUT DEXSTAR'S PERMISSION.
 ALL PART NUMBERS, DIMENSIONS AND SPECIFICATIONS IN THIS CATALOG ARE SUBJECT TO CHANGE WITHOUT NOTICE.**